

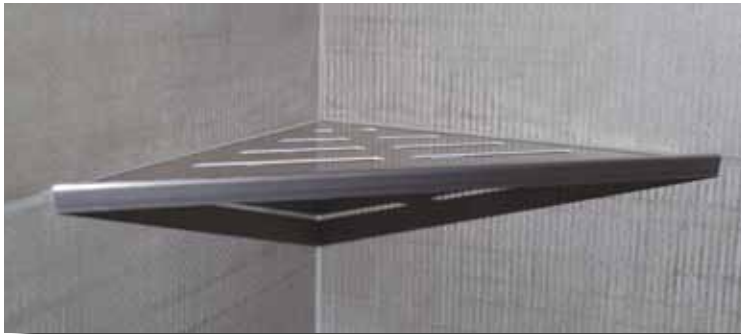


GREAT LAKES TILE PRODUCTS

CLEVER CORNER

Innovative Shower Corner Shelf

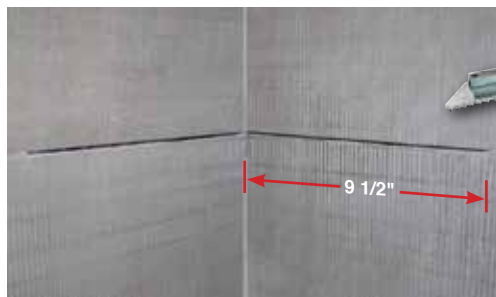
Patent Pending



For New Construction and Remodeling Projects

Fits Into Grout Joint

No Tile Cutting Required



Easy to install...

- Remove grout approximately 9 1/2" from inner corner on each wall using a grout saw or rotary tool.
- Apply silicone in the grout cavity and/or on the edge of the shelf.
- Insert the Clever Corner Shower Shelf into the grout joint and allow the silicone to cure.
- Finish installation with additional silicone or color matching grout caulk to form a water-tight seal.



CLEVER CORNER	Great Lakes #	Price/pc
Brushed Nickel Finish	GLM-CSHBRN	\$25.99
Chrome Finish	GLM-CSHCM	\$24.99

FREE SHIPPING on full cartons | 25 pieces per carton